

Blackwave Dive Table Creator User Guide

Copyright © 2002 - 2009 Blackwave. All rights reserved.

These materials (including without limitation all articles, text, images, logos, compilation, and design) are Copyright © 2002 – 2009 Blackwave. All rights reserved. Blackwave materials may be copied and distributed on a limited basis for non-commercial purposes only, provided that any material copied remains intact and that all copies include the following notice in a clearly visible position: "Copyright © 2002 - 2009 Blackwave. All rights reserved."

These materials may not be copied or redistributed for commercial purposes or for compensation of any kind without prior written permission from Blackwave. If you have questions about these terms or would like information about licensing materials from Blackwave, please send an email to support@diveassistant.com.

Table of Contents

Getting Started	3
Introduction to Dive Tables Creator	3
User Requirements	3
Installation	3
Registration	4
Using Dive Tables Creator	6
Starting the application	6
Create a new Dive Table	6
Open an existing Dive Table	7
Saving Dive Tables	8
Screen Layout	9
Manually Editing Tab Files	12
Index	13

Getting Started

Introduction to Dive Tables Creator

Welcome to Blackwave Dive Tables Creator. Dive Tables Creator is the only Windows™ based tool for creating scuba dive tables. The application stores the output to XML files which can be imported into the Dive Assistant and Dive Tables applications.

User Requirements

To use Dive Tables Creator you will need the following software to be installed on your PC.

- Windows 98, Windows ME, Windows NT, Windows 2000, Windows 2003 or Windows XP, Vista.
- Microsoft .NET Framework 2.0. This can be downloaded from Microsoft's website free of charge:
<http://www.microsoft.com/downloads/details.aspx?familyid=0856eacb-4362-4b0d-8edd-aab15c5e04f5&displaylang=en>

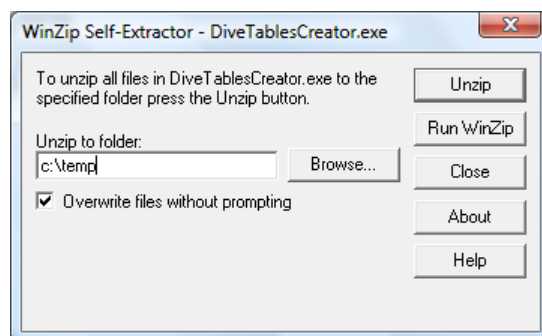
Installation

The installation of Dive Tables Creator is very easy. The first step is to install Microsoft's .Net Framework 2.0. If you have a Dive Assistant CD the .Net Framework is called dotnetfx.exe and is located in the Prerequisites folder. Otherwise download the framework from Microsoft's website.

Once the framework has been installed run the Dive Tables Creator install. The file can be found in the Applications folder on the Dive Assistant CD, or it can be downloaded from the DiveAssistant.com website:

<http://www.diveassistant.com/products/DiveTablesCreator/download.aspx>

Running DiveTablesCreator.exe will start the WinZip Self-Extractor. Select the folder you would like the setup files to be unzipped to and Click Unzip. This will copy the setup files to your specified folder



Run Setup.exe from the folder you specified in the previous step. The Installation Wizard will appear. Follow the instructions in the Wizard, and Dive Tables Creator will install itself on your PC.



Registration

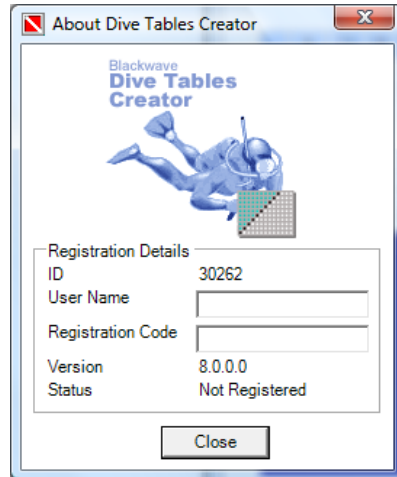
The registration code for Dive Tables Creator is based on the User Name you want to register the application under and ID from the About window. You can access the About window by clicking Help > About in the main menu. The About window is also available from the initial window that appears when you load the application.

If you purchased a CD with the Dive Assistant applications you were given an Activation Code on the back of the CD cover. If you purchased the application online you were sent or given an Activation Code. Log onto www.diveassistant.com. If you don't have an account you can create one by clicking the "New Users Click Here" link. Once you have logged in click the "Account" link. A registration wizard will appear. Enter the Activation Code you received and click Continue. Then enter the name you want to register the application under and the ID. A registration code will be created for you. The registration code will be available every time you log into your account. If you purchased the Full Pack make sure that you have the owner name from the Pocket PC and the ID from Dive Assistant – Desktop Edition available as all the applications will be registered at the same time.

If you have problems generating the registration code email the ID and Username to support@diveassistant.com and we will assist you.

To register the application go to the About window and enter the name and registration code that was generated for you. If the registration code User Name and ID match, the textbox will disappear the status will change to Registered. There are a few reasons why a registration code would not work:

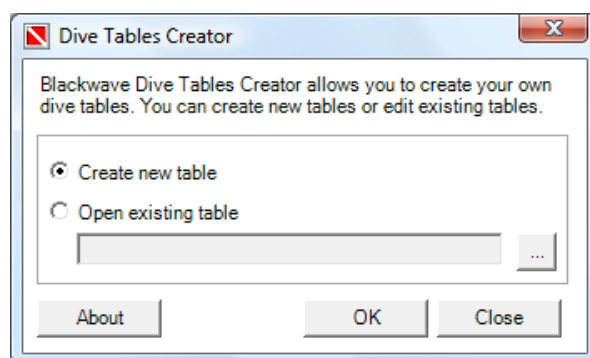
- The registration code is not valid for this version of the application
- The User Name and/or ID does not match that sent to Dive Assistant. The registration code is case sensitive as well being sensitive to punctuations and spaces.



Using Dive Tables Creator

Starting the application

To run Dive Tables Creator 2007 go to the **Start Bar** and click **All Programs > Blackwave > Dive Tables Creator > Dive Tables Creator**. This will start the application. The first screen you will see is the Splash Screen. Once the splash screen disappears you will be faced with the Dive Tables Startup page. From here you can specify if you want to create a new Dive Table or open an existing Table.



To create new table select the Create New Table radio button and Click OK. Please go the “Create a new Dive Table” section to continue with creating a new Dive Table.

To open an existing dive table select the Open Existing Table radio button and then click on the button next to the text box labelled “...”. This will bring up a window allowing you to select the dive table you would like to install. Please note that Dive Tables have the extension “.tab”. Select the dive table file you want to open and Click Open. You will return to the Startup page. You will see the filename of the selected dive table appear in the text box. Click OK.

Clicking the “Cancel” button in the Startup page will shut down the application.

Create a new Dive Table

Before creating new Dive Tables you need to specify which tables you would like to create and the sizes of the tables. When you select “Create New Dive Tables” from the Start page or “New” from the File Menu you will see a Dive Tables Settings window.

Name

Enter the name you want to call the dive table. This is the name that appears in the Dive Assistant and Dive Tables applications.

Type

Select whether you are creating a Recreational or Technical dive table. If you select the “Technical” option a new tab will appear, allowing you to specify the Nitrox mix for the dive table.

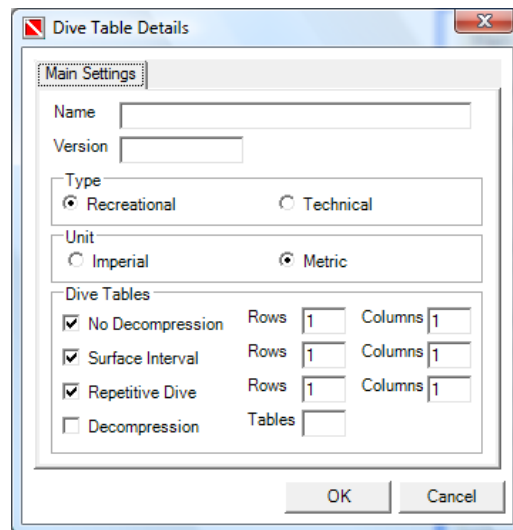
Unit

Select whether you want metric or imperial dive tables. This is important when you use the dive tables in the Dive Assistant and Dive Tables applications.

Dive Tables

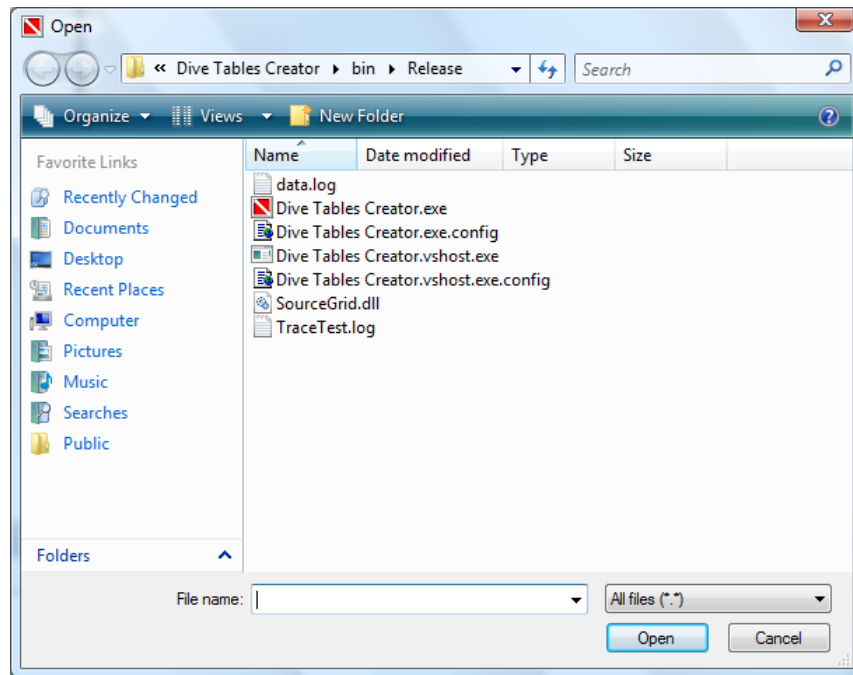
Check the dive tables you want to create. The options are “No Decompression”, “Surface Interval”, “Repetitive Dive” and “Deco”. For “No Decompression”, “Surface Interval”, “Repetitive Dive” you can specify the number of columns and rows you want for each table. Checking the “Deco” box will bring up a new tab, which will let you specify how many deco tables, you want and their respective rows and columns.

Once you are happy with your configuration click the OK button. This will bring up the main Dive Tables Creator screen, with no data in it.



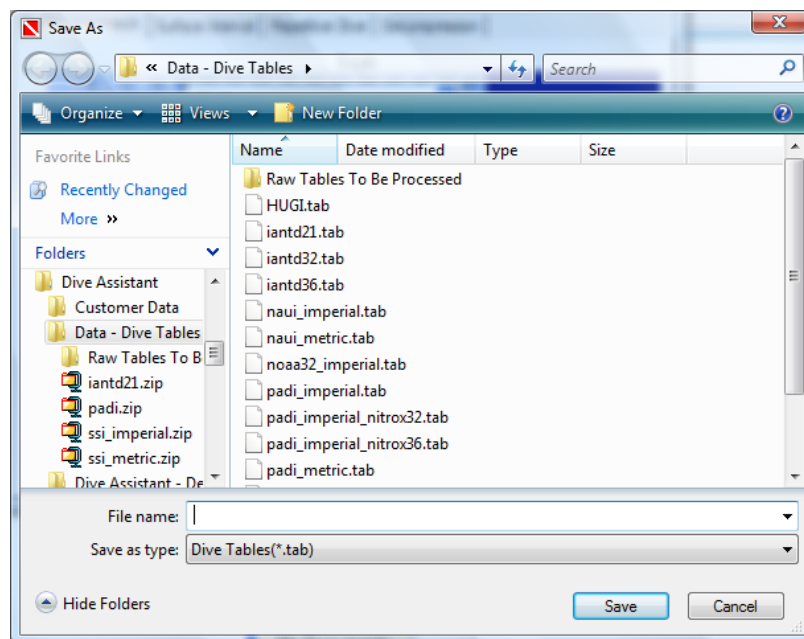
Open an existing Dive Table

You can open an existing dive table by selecting “Open Existing Table” when the application starts or by selecting File -> Open from the main menu. When you open an existing dive table you will not be given the configuration screen that you see for New Dive Tables. Instead the application loads up the main screen with the Dive Table details pre-populate.



Saving Dive Tables

To save dive tables click on the Save menu option under the File menu. A Save As window will appear. Specify the name you want to save the table as and click OK.



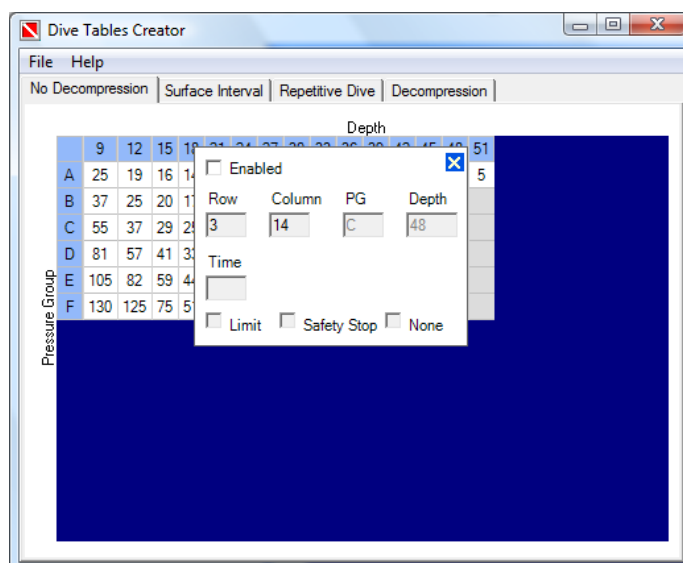
Screen Layout

The main screen consists of a window with a number of tabs across the top. The number of tabs depends on the dive tables specified on the configuration screen when you create a new dive table, or the details stored in the tables file of the dive table you requested to open. Each tab represents one type of sub table. For recreational dive tables there will usually be 3 tabs: “No Decompression”, “Surface Interval” and “Repetitive Dive”. Technical dive tables may also have a “Decompression” tab. The layout of the 3 recreational tabs are all the same. Each tab has a grid covering the space of the tab. The grids are used to display the dive table’s details. Along the top and the left side you have a single row and column in blue, representing the headings for that sub table.

The main screen can be resized by clicking and dragging on any of the borders of the main window. Resizing the window will automatically resize the tabs and grids within it.

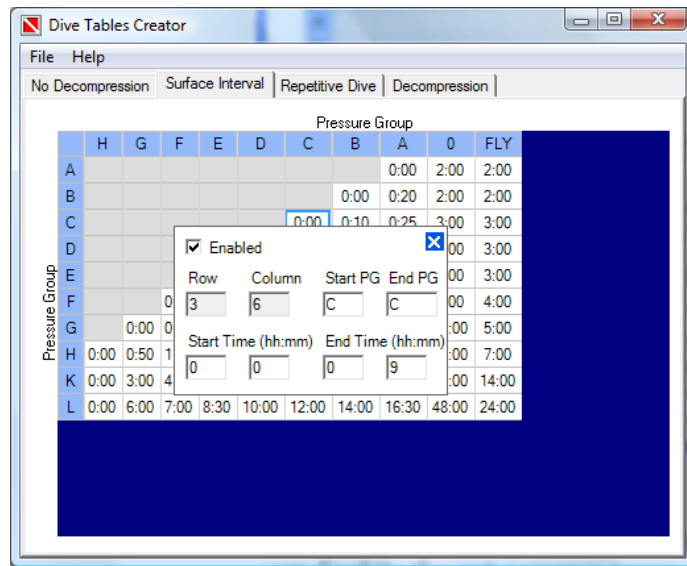
No Decompression Tab

The No Decompression tab represents the no decompression sub table. The top row displays depths, whereas the first column shows pressure groups. Clicking on a cell in the first row or first column brings up a popup window which will let you set the associated depth/pressure group. Clicking on one of the data cells brings up a popup which allows you to set the details for that cell. The pressure group and depth are automatically populated if the row and column headers have been set. Otherwise they are empty. The Enable box allows you to specify if there is data associated with the cell. Cells which are in the middle of the dive table should be enabled, but have an empty Time field and the None box checked. The grid displays the value set in the Time field. When you change cells or click the close (X) button in the top left of the popup the grid is updated.



Surface Interval Tab

The Surface Interval tab represents the surface interval sub table. The top row displays the out pressure group, whereas the first column shows the in pressure groups. Clicking on a cell in the first row or first column brings up a popup window which will let you set the associated pressure group. Clicking on one of the data cells brings up a popup which allows you to set the details for that cell. The pressure groups are automatically populated if the row and column headers have been set. Otherwise they are empty. The Enable box allows you to specify if there is data associated with the cell. The grid displays the Start Time. When you change cells or click the close (X) button in the top left of the popup the grid is updated.



Repetitive Dive Tab

The Repetitive tab represents the repetitive dive sub table. The top row displays the out pressure group, whereas the first column shows the new dive depth. Clicking on a cell in the first row or first column brings up a popup window which will let you set the associated pressure group/depth. Clicking on one of the data cells brings up a popup which allows you to set the details for that cell. The pressure group and depth are automatically populated if the row and column headers have been set. Otherwise they are empty. The Enable box allows you to specify if there is data associated with the cell. The grid displays the repetitive dive time penalty. When you change cells or click the close (X) button in the top left of the popup the grid is updated.

	G	F	E	D	C	B	A
9	154	130	105	81	55	37	25
12	137	111	82	57	37	25	19
15	115	88	59	41	29	20	16
18	91	68	44	33	25	17	14
21	72	53	37	28	22	15	12
24	57	42	30	24	20	13	11
27	47	35	26	21	18	12	10
30	40	30	23	19	16	11	9
33	35	27	21	17	14	10	8
36	31	24	19	15	12	9	7
39	27	21	17	14	11	8	7
42	25	19	16	13	10	7	6

Decompression Tab

The Decompression tab represents the decompression sub table. Unlike the other sub tables, the decompression table consists of multiple tables. Each table has an associated depth, which appears in the drop down. Changing the selection in the drop down changes the grid to display the appropriate table. The top row displays stop depth, whereas the first column shows the depth of the dive. Clicking on a cell in the first row or first column brings up a popup window which will let you set the associated stop depth/dive depth. Clicking on one of the data cells brings up a popup which allows you to set the details for that cell. The stop depth and depth are automatically populated if the row and column headers have been set. Otherwise they are empty. The Enable box allows you to specify if there is data associated with the cell. The grid displays the value set in the Stop Time field. When you change cells or click the close (X) button in the top left of the popup the grid is updated.

	15	12	9	6	3	RG
125					1	F
150					4	G
180					10	H
210					17	H
240					23	K
270					31	K
300					42	L

Manually Editing Tab Files

Dive Tables are stored as XML files, which are basically text files with special formatting. Dive Tables Creator was designed to simplify the creation and editing of the Dive Tables files, by giving users a graphical interface for editing the tables. There is nothing stopping you from creating or modifying the dive tables manually using a text editor. If you do this please take care to keep the formatting consistent.

Index

C	O
Copyright, i	open, 6, 7, 9
Create, 6	Open, 6, 7
D	R
Decompression, 11	Repetitive Dive, 10
Dive Tables, 3, 4, 6, 7, 8, 12	Repetitive tab, 10
E	S
existing, 7	Save, 8
I	Saving, 8
Installation, 3, 4	Starting the application, 6
Introduction, 3	Surface Interval, 7, 9, 10
M	T
Manually, 12	Type, 7
N	U
Name, 6	Unit, 7
No Decompression, 9	User Requirements, 3
No Decompression tab, 9	