

Blackwave Dive Tables User Guide

Copyright © 2002 - 2009 Blackwave. All rights reserved.

These materials (including without limitation all articles, text, images, logos, compilation, and design) are Copyright © 2002 – 2009 Blackwave. All rights reserved. Blackwave materials may be copied and distributed on a limited basis for non-commercial purposes only, provided that any material copied remains intact and that all copies include the following notice in a clearly visible position: "Copyright © 2002 - 2009 Blackwave. All rights reserved."

These materials may not be copied or redistributed for commercial purposes or for compensation of any kind without prior written permission from Blackwave. If you have questions about these terms or would like information about licensing materials from Blackwave, please send an email to support@diveassistant.com.

Table of Contents

Getting Started	3
Introduction to Dive Tables	3
User Requirements	3
Installation	3
Registration	4
Using Dive Tables	6
Starting the application	6
Using	6
Importing Dive Tables	7
Deleting Dive Tables	7
Changing Dive Table	7
Index	8

Getting Started

Introduction to Dive Tables

Welcome to Blackwave Dive Tables - Pocket PC Edition. Dive Tables and Dive Assistant are the only Pocket PC based applications for viewing diving tables. Dive Tables supports all recreational and Nitrox tables, although you may need to write your own tables using the Dive Tables Creator.

User Requirements

To use Dive Tables - Pocket PC Edition you will need

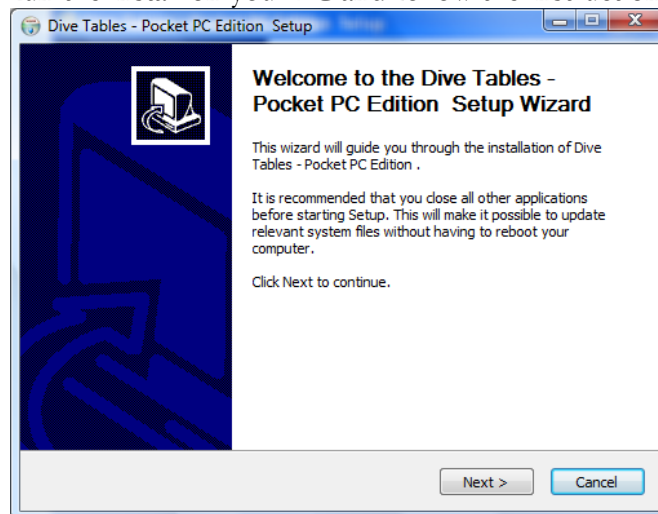
- Pocket PC with the Pocket PC 2003, Windows Mobile 5 or later
- Microsoft .NET Compact Framework 2.0, available from Microsoft's website:
<http://www.microsoft.com/downloads/details.aspx?familyid=9655156b-356b-4a2c-857c-e62f50ae9a55&displaylang=en>

Installation

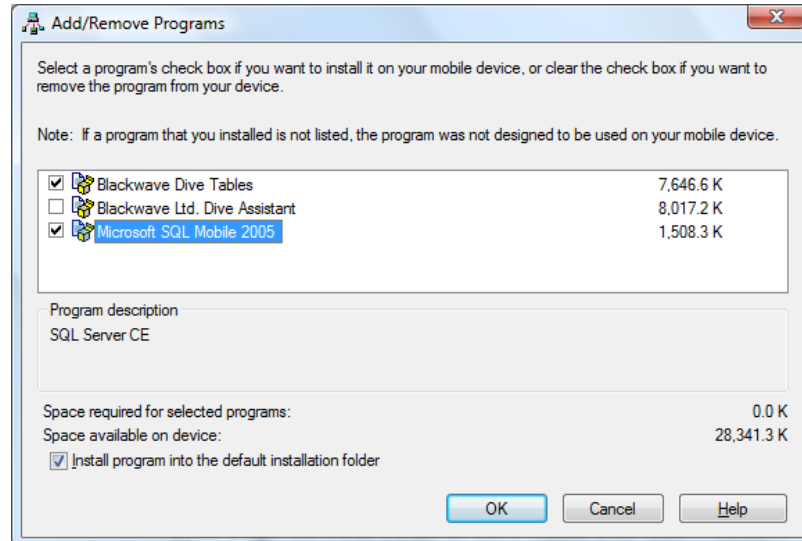
If you do not have Microsoft's Compact Framework 2.0 installed on your Pocket PC, download the framework from Microsoft's website. The link can be found in the previous section of this document. Install the Compact Framework 2.0.

The installation of Dive Tables - Pocket PC Edition is very easy. Download or select the version of the application that matches your Pocket PC's operating system. Dive Tables support Pocket PC 2003, Windows Mobile 5 and Windows Mobile 6. The latest version can always be found on the Dive Assistant website.

Run the install on your PC and follow the instructions in the Wizard:



The install process will install files on your PC and then start the Pocket PC install if your Pocket PC is connected. If it is not connected the Pocket PC install will start the next time it is connected to the PC. The Pocket PC Install looks something like the screenshot below. You can specify if you want to install the application in the default folder or in another location. Other than that there are very few options.

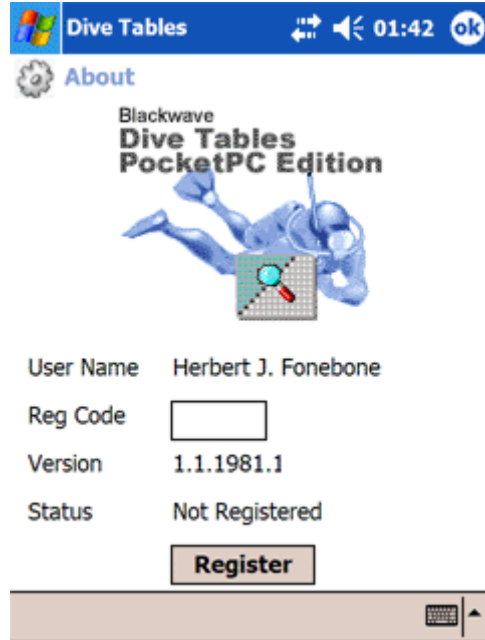


Registration

The registration code for Dive Tables is based on the **Owner Name** on your Pocket PC. In Dive Tables it is known as your **User Name**. The Owner details are set in the **Settings > Owner Information** screen on your Pocket PC.

If you purchased a CD with the Dive Assistant applications you were given an Activation Code on the back of the CD cover. If you purchased the application online you were sent or given an Activation Code. Log onto www.diveassistant.com. If you don't have an account you can create one by clicking the "New Users Click Here" link. Once you have logged in click the "Account" link. A registration wizard will appear. Enter the Activation Code you received and click Continue. Then enter the **owner Name** from your Pocket PC. A registration code will be created for you. The registration code will be available every time you log into your account. If you purchased the Full Pack make sure that you have the owner name from the Pocket PC and the ID from Dive Assistant – Desktop Edition and Dive Tables Creator available as all the applications will be registered at the same time. To register your copy of Dive Tables click **About** in the menu from the main page. The About window will appear. Type the registration code created by the website or sent to you from Dive Assistant into the **Reg Code** field and click the **Register** button. If the registration code is correct the textbox will disappear the status will change to Registered. There are a few reasons why a registration code would not work:

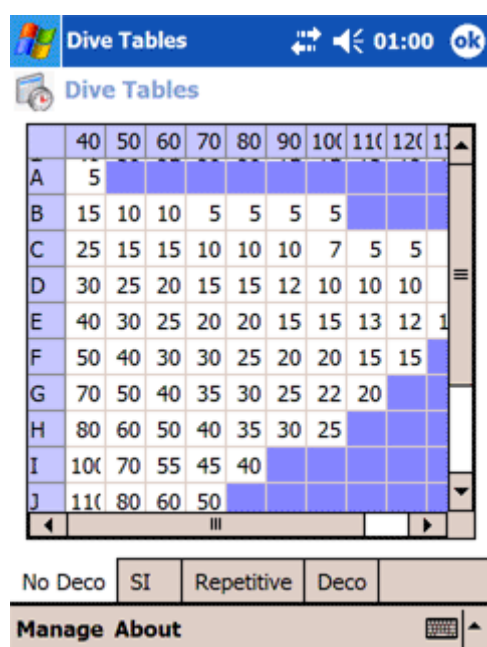
- The registration code is not valid for this version of the application
- The Owner Name/User Name does not match that sent to Dive Assistant. The registration code is case sensitive as well being sensitive to punctuations and spaces.



Using Dive Tables

Starting the application

There are 2 ways of running Dive Tables. The Dive Tables application may appear in the Start Menu. If it does, then click on the Dive Tables menu item. If it does not appear in the menu, click Programs in the Start Menu. Dive Tables will appear as one of the programs. The first time the application loads there will not be any dive table loaded and the grid will be empty. Click **Manage** on main menu, and the **Manage Tables** window will appear. If there are no dive tables listed you will need to import the dive table(s) you want to install. Look in the import section on how to import dives tables, and the **Changing Dive Tables** section on how to change the current dive table.



The screenshot shows the Dive Tables application window. At the top, there is a title bar with the Windows logo, the text "Dive Tables", and system icons for volume and a timer set to 01:00. Below the title bar is a menu bar with "Dive Tables". The main area contains a grid of dive tables with columns labeled 40, 50, 60, 70, 80, 90, 100, 110, 120, and 130. The rows are labeled A through J. The data in the grid is as follows:

	40	50	60	70	80	90	100	110	120	130
A	5									
B	15	10	10	5	5	5	5			
C	25	15	15	10	10	10	7	5	5	
D	30	25	20	15	15	12	10	10	10	
E	40	30	25	20	20	15	15	13	12	1
F	50	40	30	30	25	20	20	15	15	
G	70	50	40	35	30	25	22	20		
H	80	60	50	40	35	30	25			
I	100	70	55	45	40					
J	110	80	60	50						

Below the grid are four tabs: "No Deco", "SI", "Repetitive", and "Deco". At the bottom, there is a "Manage About" button.

Using

Dive Tables – Pocket PC Edition is a dive table lookup application. It allows you to view dive tables on your Pocket PC. Dive Tables can only display one set of dive tables at a time. Look in the Changing Dive Tables section on how to change the table you are using.

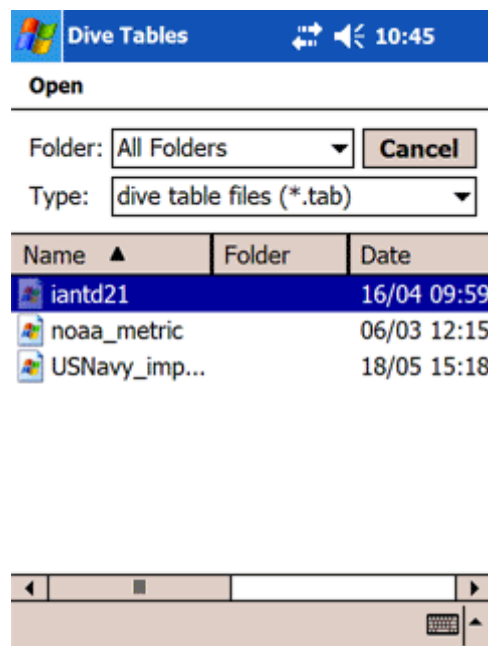
Each dive table is displayed with a separate tab. There is always a No Deco, SI and Repetitive tab, but only sets with decompression tables has a Deco tab. When the application loads up it will only load the No Deco data. The data for the other tables is only loaded when the tabs are clicked. This is to save loading time.

The dive tables may not appear exactly as they do in the physical tables you own, as we have standardised the look and feel to be consistent across all dive tables. The dive table data is still the same as the

physical data though.

Importing Dive Tables

To Import dive tables you need to go to the **Manage Tables** window. From the menu click **File > Import** from the main menu or Click and Hold in the list, until a popup menu appear. In the popup menu select **Import**. A new window will appear called **Open**. The Open window lists all dive table files located in your My Documents folder on your Pocket PC. Select the dive table you want to import, and wait. The import process will take about 1 minute to complete. You manually have to copy the dive tables into the My Documents folder from your PC. The file extension for dive tables is .tab.



Deleting Dive Tables

To delete dive tables you need to go to the **Manage Tables** window. Click and Hold in the list, until a popup menu appear. In the popup menu select **Delete**.

Changing Dive Table

To change the dive table that appears in the main window you need to go to the **Manage Tables** window. Click and Hold in the list, until a popup menu appear. In the popup menu click **Set as Current**. This will set the selected dive table to be the current dive table. A green tick will appear next to the current table. When you return to the main application window, the new current table will load up.

Index

	C		M
Changing Dive Table, 7		Manage Tables , 7	
Copyright , i		My Documents, 7	
	D		R
delete, 7		Register , 4	
Dive Tables, 3, 6			S
	I	Starting the application, 6	
Importing Dive Tables, 7			U
Installation, 3, 4		User Requirements, 3	
Introduction, 3			