

Dive Assistant Template Builder User Guide

Copyright © 2002 - 2008 Blackwave. All rights reserved.

These materials (including without limitation all articles, text, images, logos, compilation, and design) are Copyright © 2002 – 2008 Blackwave. All rights reserved. Blackwave materials may be copied and distributed on a limited basis for non-commercial purposes only, provided that any material copied remains intact and that all copies include the following notice in a clearly visible position: "Copyright © 2002 - 2008 Blackwave. All rights reserved."

These materials may not be copied or redistributed for commercial purposes or for compensation of any kind without prior written permission from Blackwave. If you have questions about these terms or would like information about licensing materials from Blackwave, please send an email to support@blackwave.com .

Table of Contents

Getting Started	3
Introduction to Template Builder	3
User Requirements	3
Installation	3
Registration	3
Using Template Builder	4
Starting the application	4
Using	4
Print Elements	5
Elements List	8
Preview Screen	9
How to	10
Index	12

Getting Started

Introduction to Template Builder

Welcome to Dive Assistant Template Builder. Template Builder is an tool for building printing templates, for use in the Dive Assistant.

User Requirements

To use Dive Assistant Template Builder 2008 you will need

- Windows 98, Windows ME, Windows NT, Windows 2000, Windows 2003 or Windows XP.
- Microsoft .NET Framework 2.0. This can be downloaded from Microsoft's website free of charge:
<http://www.microsoft.com/downloads/details.aspx?familyid=0856eacb-4362-4b0d-8cdd-aab15c5e04f5&displaylang=en>

Installation

Dive Assistant Template Builder 2008 comes installed with Dive Assist – Desktop Edition 2008. There is no separate install for the application

Registration

No registration code is required to use Dive Assistant Template Builder 2008.

Using Template Builder

Starting the application

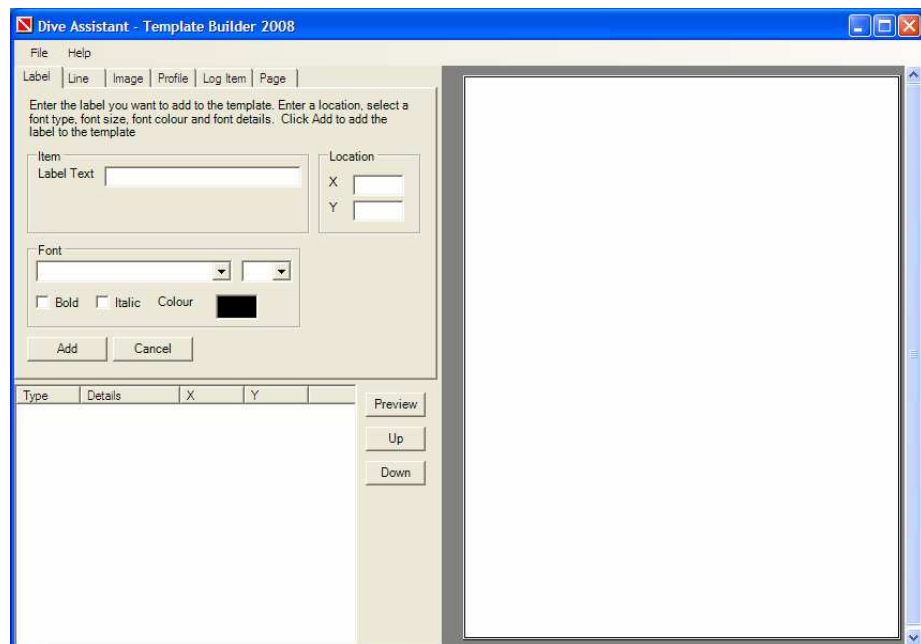
Dive Assistant – Template Builder is located in the same folder as Dive Assistant – Desktop Edition. To start the application go to the Start menu and select All Programs -> Blackwave -> Dive Assistant. In the folder you will find Dive Assistant – Template Builder.

Click Dive Assistant – Template Builder. This will launch the application.

Using

Dive Assistant – Template Builder is a tool for creating print templates for use within Dive Assistant – Desktop Edition. The application creates XML based template documents which get picked up by Dive Assistant.

The application window looks as follows:



The screen is split into 3 sections. On the top left you will find all the print elements. They are Label, Line, Image, Profile, Log Item and Page. Below the print elements section is the elements list. It lists all the print elements in your template. Finally on the right is the print preview screen. Continue reading to find out about each section.

Print Elements

The print elements are the individual parts that make up a Print Template. The elements are Label, Line, Image, Profile, Log Item. Each element type has its own tab on the tab list. The final tab is Page, which allows you to configure the page orientation for your template. It also displays the paper size and margins for your default printer.

Label

The Label tab allows you to create a new label. A label is a static piece of text that is displayed in the printer output. A label may for example say "Time In". Next to it you may put the Time In log item. The label describes which log item is displayed. A label can also be a title for the printed log.

For each label you can specify the text to be displayed, the location on the page. The location is specified in pixels starting in the upper left corner as 0, 0 and the bottom right being the maximum. The details can be found in the Page tab. You can also set the font, font size, colour, bold and italic.

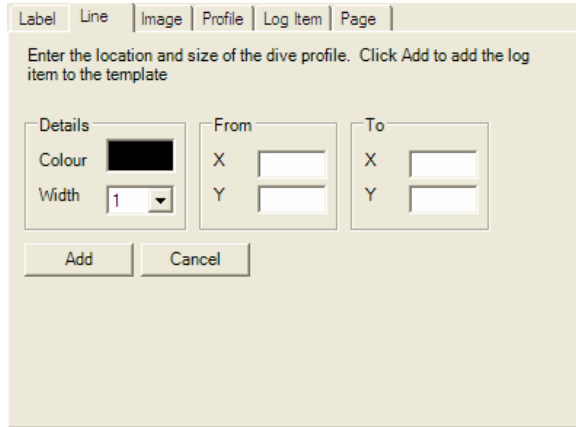
The screenshot shows a dialog box titled "Label" with several tabs: "Label", "Line", "Image", "Profile", "Log Item", and "Page". The "Label" tab is selected. The dialog contains the following fields and controls:

- Item:** A text input field labeled "Label Text".
- Location:** Two input fields labeled "X" and "Y".
- Font:** A dropdown menu for font name, a small input field for font size, and checkboxes for "Bold" and "Italic".
- Colour:** A color selection box currently showing black.
- Buttons:** "Add" and "Cancel" buttons at the bottom.

Line

The Line tab allows you to draw a line. For each line you can specify the start and end point, the line width and the line colour.

The location is specified in pixels starting in the upper left corner as 0, 0 and the bottom right being the maximum. The details can be found in the Page tab.

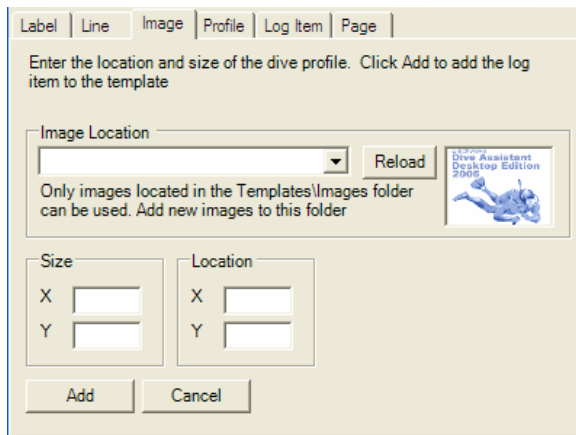


Image

The image tab allows you to add images to your template. Template Builder will only use images that are stored in the [Dive Assistant]\Templates\Images folder. The dropdown list of images is automatically populated when you start the application. If you have copied images into the folder after starting the application you can click the Refresh button to reload the list.

When you select an image from the list the image will be loaded into a preview box so that you can see the image. Template Builder support the following image formats BMP, GIF, JPG and PNG.

For each image you can specify the location and the size of the image. The location is specified in pixels starting in the upper left corner as 0, 0 and the bottom right being the maximum. The details can be found in the Page tab.



Profile

The Profile tab allows you to add your dive profile to your print template. The profile tab allows you to specify the size and location of the profile. The location is specified in pixels starting in the upper left corner as 0, 0 and the bottom right being the maximum. The details can be found in the Page tab.

The size is also specified in pixels. Template Builder requires the profile to have a minimum size of 200 x 100.

The template has a border surrounding it. You can remove the border, and change the colour of the border. The border colour also affects the colour of the template, except for the profile line.

The profile line is the line that shows the dive profile. You can set the width and the colour of the line.

If no profile exists for a dive the profile will not be displayed.

Label | Line | Image | Profile | Log Item | Page

Enter the location and size of the dive profile. Click Add to add the log item to the template. Note that the size must be at least 200 x 100

Border Show Colour [Black Swatch]

Profile Line Width [Dropdown] Colour [Black Swatch]

Location X [Input] Y [Input]

Size X [Input] Y [Input]

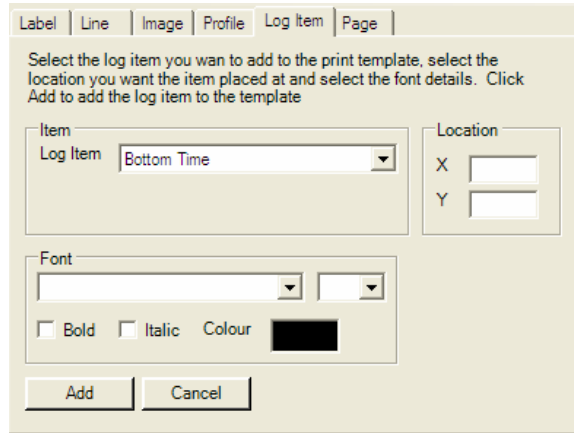
Add Cancel

Log Item

Log items are print elements that are retrieved from your dive log. Each printable item can be found in the log item drop down list. When you select a log item a short description of the item appears below the list describing the item and in some cases what size the item is and how it is formatted. Examples of log items are dive number, bottom time, dive buddy, location to name a few.

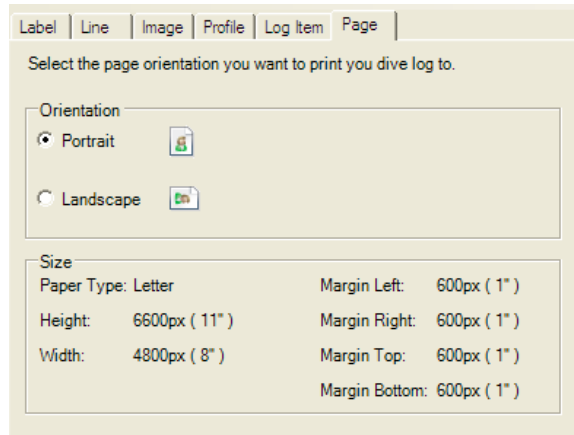
There a few special log items that are treated differently to the other log items. They are Signature and Comment. Signature displays the dive buddies signature, and comment displays the comments. Both items have borders and use a pre set size. In the preview window you will see a box of the corresponding size representing the data.

For all log items you can specify the location, font, font size, colour, bold and italics. The location is specified in pixels starting in the upper left corner as 0, 0 and the bottom right being the maximum. The details can be found in the Page tab.



Page

The Page tab allows you to specify the page orientation of your print template. It also displays the paper type, paper size and margins.



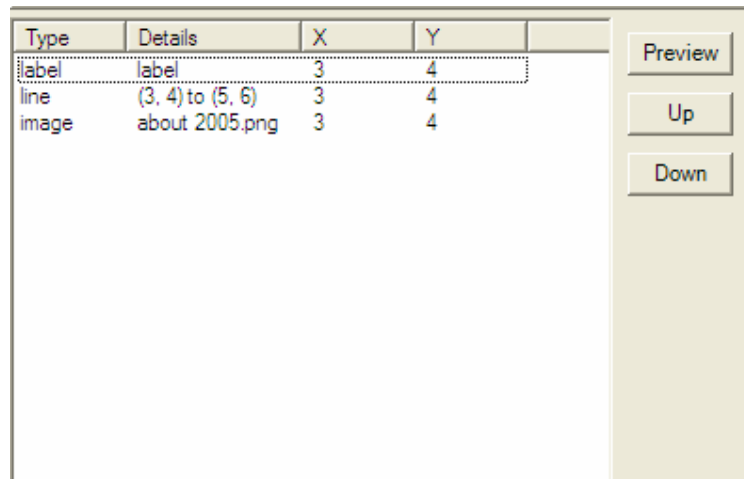
Elements List

The Elements list is located below the print elements, in the bottom left of the Template Builder window. The elements list is a list of all the print elements that you have added to your template. The items are order according in the order they were added to the list. You can change the ordering by selecting the item you want to move, and clicking the up and down buttons until the item is in the location you want it in.

The ordering in the list is the order in which the list items are printed on the page. Items you want in the background should be at the top of the list.

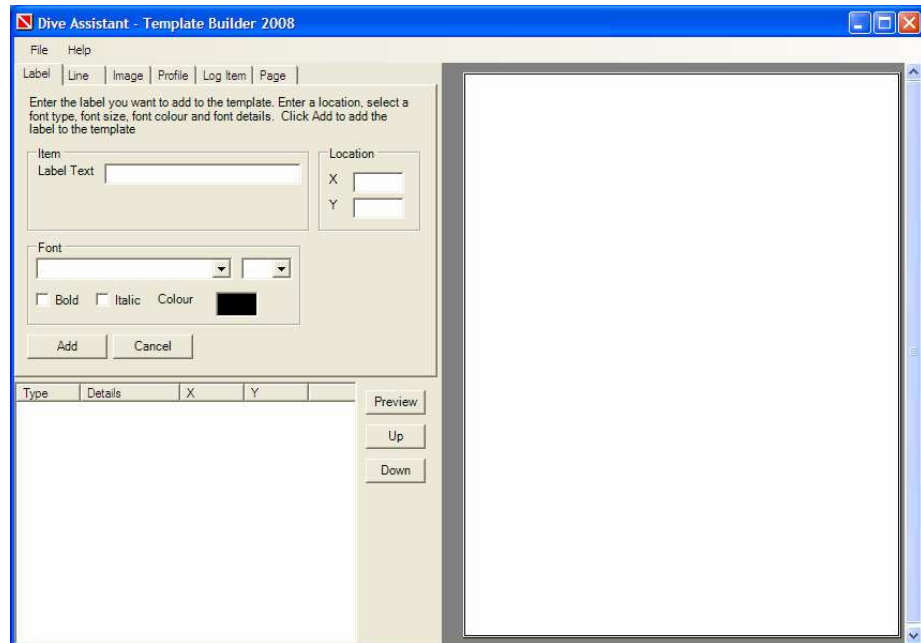
The list displays the type of print item it is, the details of the item or its size and the location the item is supposed to be placed. The details section varies depending on the type: for an image the details will display the image name, for a line it will display the start and end point and for a log item it will display the actual type of log item.

The Preview button will redraw the preview screen.



Preview Screen

The preview screen is located on the right part of the window. It displays a preview of how the print template will look when it is used in the Dive Assistant application. To refresh the preview with the latest layout click the Preview button



How to

The How to section describes how to perform different tasks in the Template Builder.

Add new item

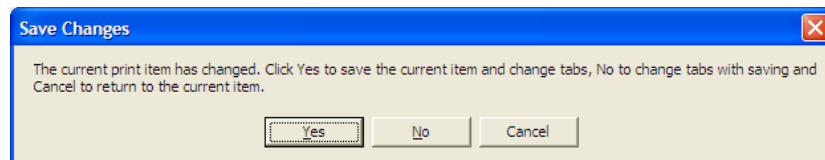
To add a new element select the element type want to add, by selecting the appropriate tab. Fill in the details for the item and click the Add button. This will add the element to the Elements List. If you click the Cancel button the changes to the item will be removed. The Page tab displays details of the template page you are using. The Height and Width fields show the size of the page, in inches and pixels. A pixel is a single point on the page. When you add an item you need to specify the X and Y values for that element. This is the top left corner of the item you are adding.

Edit existing item

To edit an existing item double click on the item on the Elements List, or select the item in the list, right click and select Edit from the popup menu. This will load the element into the appropriate tab and display the tab. The Add button is changed to Edit.

Make the changes you want to the element and click Edit. This will update the item in the Elements List. Clicking Cancel will undo the changes and clear the tab.

If you try to access an element item while one is being edited you will be asked if you want to save changes to the current element. This will also happen if you change tabs, as that constitutes a change of element. This only occurs if changes have occurred to the current element.



Delete item

To delete an item from the template, select the item you want to delete from the Elements List and right click on it. Select Delete from the popup menu.

New Template

To create a new template select New from the main menu (File -> New). If changes have been made to the existing template you will be asked if you want to save it.

Open Template

To open an existing template select Open from the main menu (File -> Open) and select the template you want to open from the window.

If changes have been made to the existing template you will be asked if you want to save it.

Save Template

To save the current template click Save on the main main (File -> Save). Enter the name and location you want to save the template to. Please note that Dive Assistant will only use templates located in the [Dive Assistant]\Templates folder.

Index

	A		L
add new item, 10		label, 5	
		line, 5	
	C	log item, 7	
Copyright, i			N
	D	new template, 10	
delete item, 10			O
Dive Tables, 4		open template, 10	
	E		P
edit existing item, 10		page, 8	
element list, 8		preview screen, 9	
	H	Print Elements, 5	
how to, 10		profile, 6	
	I		S
image, 6		save template, 10	
Installation, 3		Starting the application, 4	
Introduction, 3			U
		User Requirements, 3	
		Using, 4	